

TITLE / DESCRIZIONE	DRN / DIS	CHD / VER	APPR
"60 cm-tall SHRINK Single hole, deck-mount, mixing temperature monoblock faucet Pre-Rinse Unit with riser add-on faucet with 170mm swivel nozzle. 50mm-long mounting shank, G3/8" female inlets with check valves, G1/2" ¼ turn ceramic headworks, riser tube - stainless steel, brass, chrome plated, grey details, 14L/min KLARCO "BEST HOME" spray valve	SCALE / SCALA	DATE / DATA	SHEET / PAG
	1:6	25/03/2020	1 of 2

This drawing contains proprietary information which is the property of KLARCO S.R.L. without whose written permission it may not be copied, shown or handed to a third party or otherwise used

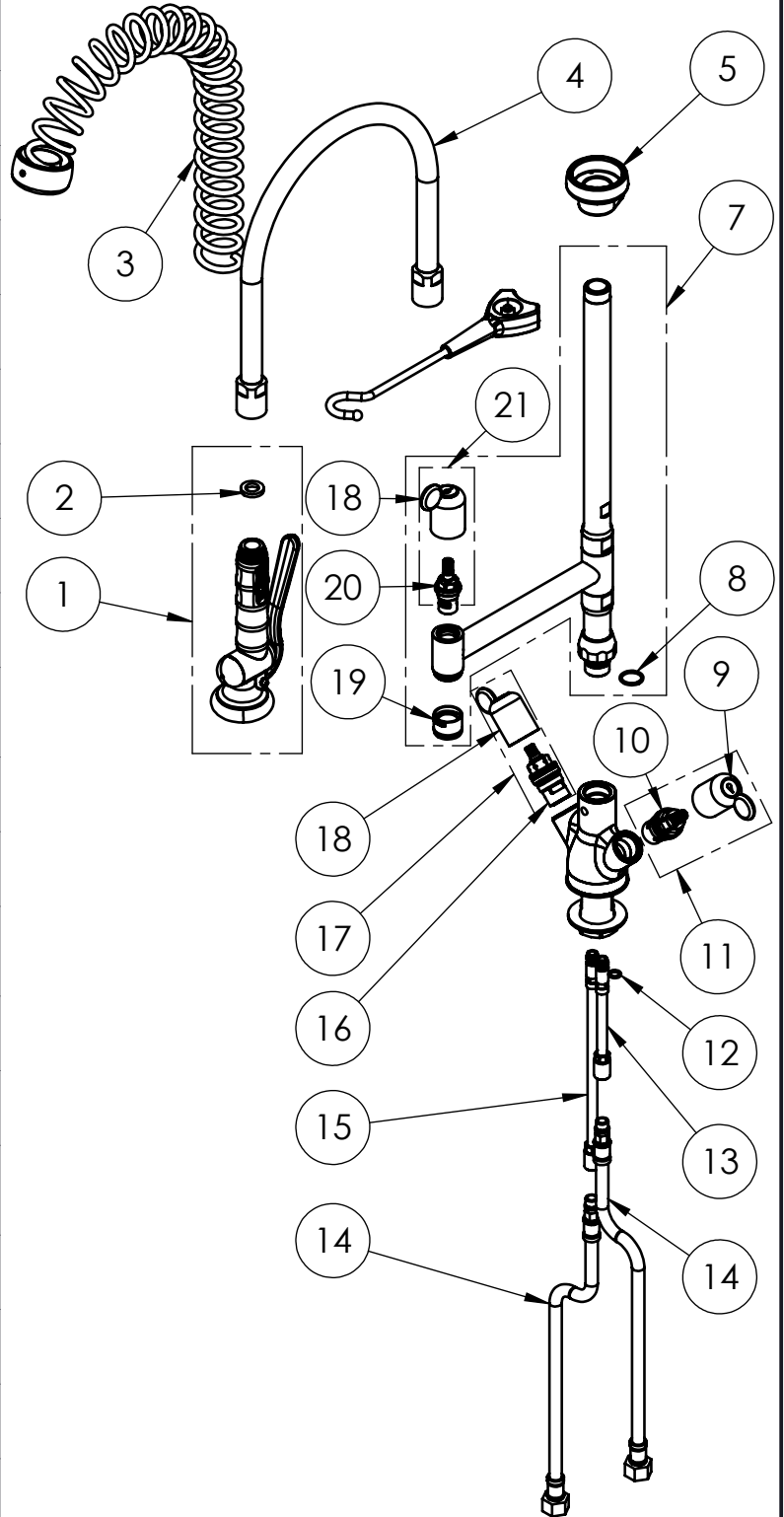
Questo disegno contiene informazioni di proprietà di KLARCO S.R.L. e senza la sua autorizzazione scritta non può essere copiato, mostrato o ceduto a terzi o in qualsiasi altro modo usato

NUMBER / CODICE DIS.

MODEL / PRODOTTO
360G.R050CG

A4V

ITEM NO.	SALES NO.	DESCRIPTION
1	P516/"color"	SPRAY VALVE "HOME" (specify the color)
2	P610	GASKET 1/2" Ø18,5x11 sp.3mm, FASIT OMNIA
3	P622/"color"	OVERHEAD SPRING SH60-70 (specify the color)
4	F153	Flexinox 60cm Ø14 (Øint.8) F1/2" F1/2"
5	P628/"color"	SHRINK SPRING SUPPORT (specify the color)
6	P599/"color"	SPRAY VALVE HOOK (specify the color)
7	P606/D1/DT	KL60 RISER W.ADD ON TAP L.170 AND O-RING
8	P076	O-RING 2062 (Ø15.6x1.78), EPDM 70 PEROX
9	HTC/B	"TOP" HANDLE W.BLUE CODED INDEX
10	V0C0/D	1/2" CERAMIC HEADWORK (RH)
11	V0CT/B	COMPLETE HANDLE W.BLUE CODED INDEX + CERAMIC HEADWORK KIT
12	P158	O-RING 106 (Ø6.75x1.78), EPDM 70
13	P615	EXTENSION COPPER PIPE L.115mm w.O-RING
14	F181	L.35cm Flex S.S. Hose Ø10-DN6X Female G3/8" W.Backflow Preventer (C)
15	P617	EXTENSION COPPER PIPE L.210mm w.O-RING
16	V0C0/S	1/2" CERAMIC HEADWORK (LH)
17	V0CT/R	COMPLETE HANDLE W.RED CODED INDEX + CERAMIC HEADWORK KIT
18	HTC/R	"TOP" HANDLE W.RED CODED INDEX
19	P626	5l/min STREAM REGULATOR OUTLET (Ø20 SPOUT)
20	V0D0	3/8" CERAMIC HEADWORK (RH)
21	V0DT/R	COMPLETE HANDLE W.RED CODED INDEX + CERAMIC HEADWORK KIT



TITLE / DESCRIZIONE
"60 cm-tall SHRINK Single hole, deck-mount, mixing temperature monoblock faucet Pre-Rinse Unit with riser add-on faucet with 170mm swivel nozzle. 50mm-long mounting shank, G3/8" female inlets with check valves, G1/2" ¼ turn ceramic headworks, riser tube - stainless steel, brass, chrome plated, grey details, 14L/min KLARCO "BEST HOME" spray valve

This drawing contains proprietary information which is the property of KLARCO S.R.L. without whose written permission it may not be copied, shown or handed to a third party or otherwise used

Questo disegno contiene informazioni di proprietà di KLARCO S.R.L. e senza la sua autorizzazione scritta non può essere copiato, mostrato o ceduto a terzi o in qualsiasi altro modo usato

DRN / DIS	CHD / VER	APPR
SCALE / SCALA 1:6	DATE / DATA 25/03/2020	SHEET / PAG 2 of 2
NUMBER / CODICE DIS.	MODEL / PRODOTTO 360G.R050CG	A4V