

TITLE / DESCRIZIONE

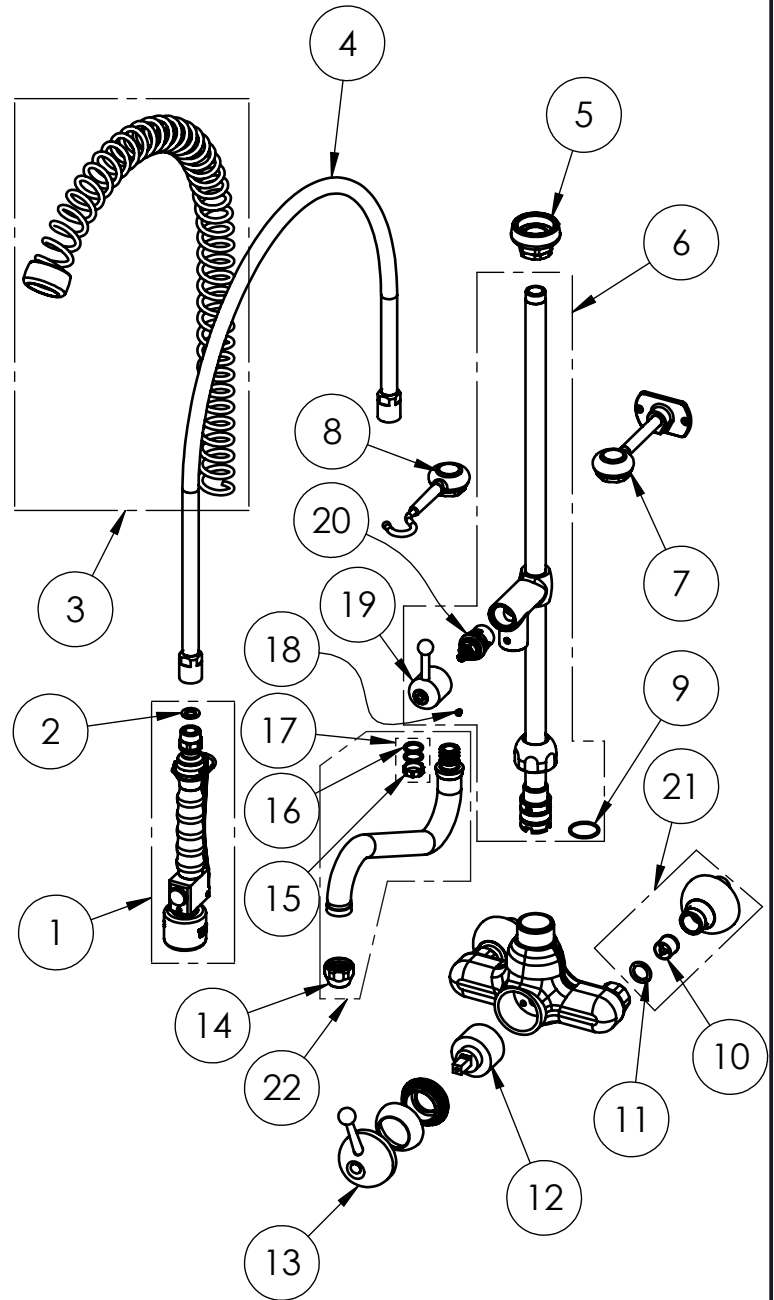
Extra robust and high flow double hole (135-175mm adjustable center distance) wall mount Pre-Rinse Unit with single lever (LCA) mixing faucet, riser add-on faucet with 250mm swivel nozzle (Ø 25mm), G1/2" male inlets with check valves, high flow ceramic cartridge and G3/4" high flow ¼ turn ceramic headwork, riser tube – stainless steel, brass, chrome plated. 4L/min KLARCO Low-Flow spray valve.

This drawing contains proprietary information which is the property of KLARCO S.R.L. without whose written permission it may not be copied, shown or handed to a third party or otherwise used

Questo disegno contiene informazioni di proprietà di KLARCO S.R.L. e senza la sua autorizzazione scritta non può essere copiato, mostrato o ceduto a terzi o in qualsiasi altro modo usato

DRN / DIS	CHD / VER	APPR
SCALE / SCALA 1:10	DATE / DATA 03/03/2020	SHEET / PAG 1 of 2
NUMBER / CODICE DIS.	MODEL / PRODOTTO <b>3E.4040.4L.79</b>	

ITEM NO.	SALES NO.	DESCRIPTION
1	P591	SPRAY VALVE "NEW Low-Flow" "BLACK"
2	P074	FLAT GASKET 1/2" Ø18,5x11 sp.2mm
3	P005	OVERHEAD SPRING "GREY"
4	P004	100cm Ø17 F1/2"xF1/2" FLEXIBLE HOSE
5	P007	SPRING CHROMED SUPPORT
6	P139/F6	650mm G1/2" RISER W.ADD ON TAP,HANLDE, CERAMIC HEADWORK AND O-RING
7	P034	115mm WALL BRACKETCHROMED
8	P035	SPRAY VALVE CHROMED SUPPORT
9	P391	O-RING 28x2 EPDM70
10	P031	BACKFLOW PREVENTER DW20-DN15
11	P107	FLAT GASKET 3/4" Ø24x17sp.2mm
12	V070	Ø47 MIXING CARTRIDGE
13	H019	LCA SHORT LEVER
14	P014	STREAM REGULATOR OUTLET (Ø25 SPOUT)
15	P592	SWIVEL SLEEVE
16	P072	O-Ring 119 (Ø 15,08 x 2,62mm) EPDM 70
17	P613	#2 OR+#1 SWIVEL SLEEVE KIT FOR FAUCET/OUTLET
18	P236	SPOUT SCREW (short)
19	H029	LCA ADD ON TAP HANDLE
20	V0F0/D	HIGH FLOW G3/4" CERAMIC HEADWORK (SHORT PIN - RH)
21	P400	G1/2" MALE ECCENTRIC FLANGE w.BACKFLOW PREV.KIT
22	C0S3	SWING NOZZLE Ø25x250 h.60



TITLE / DESCRIZIONE	DRN / DIS	CHD / VER	APPR
Extra robust and high flow double hole (135-175mm adjustable center distance) wall mount Pre-Rinse Unit with single lever (LCA) mixing faucet, riser add-on faucet with 250mm swivel nozzle (Ø 25mm), G1/2" male inlets with check valves, high flow ceramic cartridge and G3/4" high flow ¼ turn ceramic headwork, riser tube - stainless steel, brass, chrome plated. 4L/min KLARCO Low-Flow spray valve.	SCALE / SCALA 1:8	DATE / DATA 03/03/2020	SHEET / PAG 2 of 2
This drawing contains proprietary information which is the property of KLARCO S.R.L. without whose written permission it may not be copied, shown or handed to a third party or otherwise used	Questo disegno contiene informazioni di proprietà di KLARCO S.R.L. e senza la sua autorizzazione scritta non può essere copiato, mostrato o ceduto a terzi o in qualsiasi altro modo usato	NUMBER / CODICE DIS. MODEL / PRODOTTO 3E.4040.4L.79	A4V