

Important information - Please read

NOTICE

Material damage to the orbital head due to incorrect handling of the cleaning lance

Cleaning lance can become unusable if handled incorrectly

- Do not touch the cleaning lance on the orbital head when inserting or removing it.

INFORMATION

Use the cleaning lance belonging to the device.

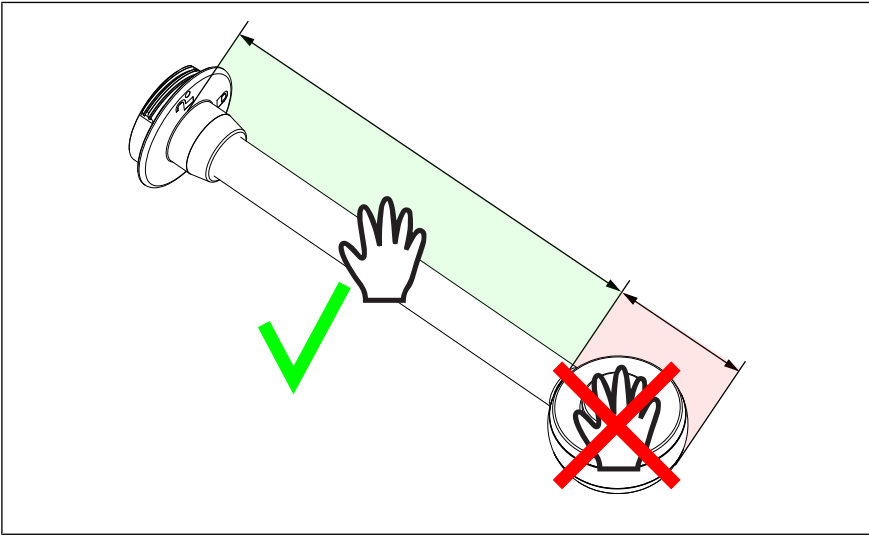


Image: Handle area

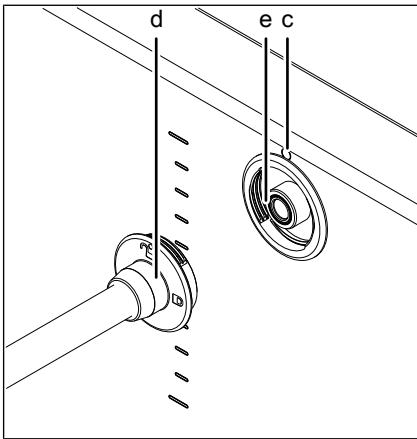
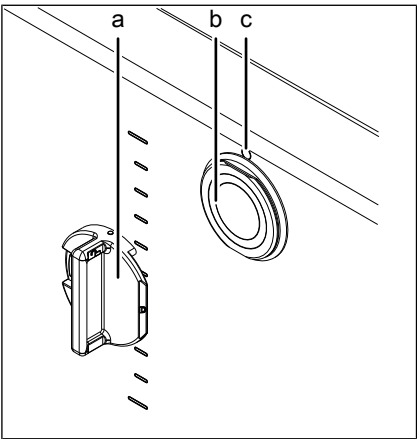


Image: Insert the cleaning lance

- a Tool
- b Cover Cleaning lance holder
- c Marking *Locking*

- d Cleaning Lance
- e Cleaning lance pick-up